





## CONTACT US

Toll-Free Phone Number

+1.844.674.4461

8am – 5pm PST Monday – Friday

Marketing/Press - [marketing@originacoustics.com](mailto:marketing@originacoustics.com)

Ordering/Customer Service - [www.origin-acoustics.eu/login](http://www.origin-acoustics.eu/login)

Design Services - [design@originacoustics.com](mailto:design@originacoustics.com)

Support - [orders@origin-acoustics.eu](mailto:orders@origin-acoustics.eu)

[www.origin-acoustics.eu](http://www.origin-acoustics.eu)

Copyright Origin Acoustics 2024

Rev 3.0 – Europe - 2024

## CURATORS OF DESIGN CENTRIC TECHNOLOGY

At Origin Acoustics, we understand that every project is unique, and that's why we take the time to listen to our partners. By understanding your needs and challenges, we strive to create solutions that work best for you.

Our commitment to our partners is at the core of everything we do. We have curated some of the best products and brands in the industry to offer a comprehensive portfolio of audio solutions. The Origin Acoustics portfolio will continue to expand in the months and years to come, providing end-to-end solutions, to meet your evolving needs.

As the original creator of the architectural loudspeaker and Curators of Design Centric Technology™, our high-performance audio solutions seamlessly blend into any environment. Whether you're looking for a discreet audio solution for a luxury home or a high-performance system for a commercial space, we have the expertise and the products to bring your vision to life.

We are dedicated to helping you grow, evolve, and succeed daily. We exist to collaborate with and serve you and your team to make this a better industry. Partnering with Origin Acoustics means gaining access to a wide range of audio solutions that cater to the diverse needs of your clients.

We invite you to experience the Origin Acoustics difference and elevate your audio experience. Partner with us and discover why we are the best choice for all your audio solution needs.



## CONTENTS

- 1 SPEAKER DESIGN**
- 9 BACKGROUND MUSIC COLLECTION**
  - 9 BEST DIRECTORS
  - 9 HIGH END DIRECTORS
  - 9 EVERYDAY DIRECTORS
- 13 THEATRE/ MEDIA ROOMS COLLECTION**
  - 14 THEATER, LCR & COMPOSER C60
  - 14 MARQUEE™ COLLECTION
  - 22 INSTAWIDTH™ SOUNDBARS
- 23 SPECIALTY COLLECTION**
  - 26 EXPLORER COLLECTION™
  - 28 THINFIT™ LOUDSPEAKERS
  - 29 MINIMAL OPENING SYSTEM™
- 31 LANDSCAPE COLLECTION**
  - 32 LUXURY LANDSCAPE LOUDSPEAKERS [BOLLARD COLLECTION]
  - 33 OUTDOOR SURFACE MOUNT LOUDSPEAKERS
  - 34 ACOUSTIC LANDSCAPE™ SYSTEMS
- 35 SUBWOOFERS COLLECTION**
  - 36 FLOOR STANDING SUBWOOFERS
  - 36 ARCHITECTURAL SUBWOOFERS
- 37 AMPLIFIER COLLECTION**
  - 38 MONO SUBWOOFER AMPLIFIERS
  - 39 DSP 3-CHANNEL AMPLIFIERS
  - 40 DISTRIBUTED AUDIO AMPLIFIERS
  - 41 PROFESSIONAL AMPLIFIERS

## DETAILED ARTICULATION



### TRI-LINEAR CONFIGURATION®

We've built an authentic three-way loudspeaker for in-ceiling applications. The transducers are stacked linearly for precise imaging and elegantly hinged for an extended pivot. Perfect for creating lifelike sound stages from above.

## ACCURATE SOUND-STAGING



### MULTI-MOTION PIVOT® (MMP®)

The secret of Origin Acoustics' superior sound staging is our patented MMP technology. All of our five series can pivot up to thirty degrees. So regardless of placement restrictions, you can direct the sound right to the listener.

## MINIMAL DISTORTION



### VARIABLE DEPTH ABSORPTION LAYER®

Surrounding the interior baffle is a precisely molded rubberized insert. Its purpose is to absorb errant frequencies that cause phase distortion. This design enhancement ensures that our long-throw woofers and DPSD™ tweeters are used to their full capabilities.

## NEUTRAL COLORATION



### COMPRESSION MOLDED WOOFER BASKETS

Using the time tested and true technique of compression molding, we designed and produced woofer baskets that are both highly stable and acoustically neutral. The result is a reduction in distortion without coloration from the basket itself.

## RESOUNDING CLARITY



### DUAL PLANE STABILIZED DIAPHRAGM™ (DPSD™)

This patented tweeter design improves high frequency performance, and prevents distortion and increases loudness.

This secondary stabilization allows the driver to be crossed over at a much lower frequency, resulting in improved dispersion and decreased distortion.

## HIGH SENSITIVITY



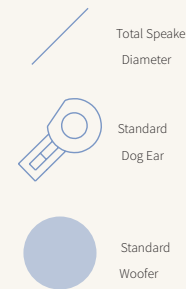
### X-WAVE SURROUND®

When a speaker cone reaches its limit of movement and comes to a hard stop, unwanted waves ripple up and down the cone. Our X-Wave Woofer Surround progressively absorbs that impact, prevents unwanted sonic distortion, and improves overall fidelity.

## TOOL-LESS MOUNTING

### NOT ALL CUTOUTS ARE EQUAL.

When it comes to the ratio of performance to grille size, Origin Acoustics' in-ceiling speakers always finish first. That's because, on average, our models have two more inches of woofer than the competitions'. We've made it possible with our tool-less mounting system. As you can see below, our woofers and surrounds begin where the other speakers are still putting their dog-ears.



Traditional 8" Dog-Ears and Woofer Overlay

Traditional 6.5" Dog-Ears and Woofer Overlay

**STANDARD CEILING SPEAKER WOOFER & DOG EARS OVERLAID ONTO ORIGIN ACOUSTICS' SPEAKERS WITH THE SAME CUTOUT SIZE.**

## WHICH IS THE CORRECT SPEAKER FOR YOU?

WE HAVE A SOLUTION FOR EVERY INSTALLATION...



### 3" MODELS

These loudspeakers have been produced specially to thrill interior designers and architects. They're the same diameter as small interior lights, so they blend right into high-end homes.

### 5" MODELS

We have three unique five-inch woofer models. These are also tailor-made to match interior lighting fixtures, so they're sure to win over any demanding designer.

## 6 PERFORMANCE LEVELS

ACROSS EACH SIZE, THE DIRECTOR COLLECTION HAS CONSISTENT LEVELS OF PERFORMANCE. THIS CLASSIFICATION SYSTEM ENSURES YOUR INSTALLATIONS ARE CONSISTENTLY TIMBRE-MATCHED, EASY TO SPECIFY, AND ALWAYS SOUND ASTOUNDING.

0

### POLY/RUBBER & PEI

The most standard speaker series, built to provide the most cost-effective, yet reliable audio solution that will surely fit within budget.

1

### POLY/RUBBER & SILK

These are fundamentally great speakers. With pivoting tweeters standard, time-tested poly/rubber woofers, and incredible fidelity for the price. These are perfect for distributed audio when critical listening isn't a necessity.

3

### GRAPHITE & ALUMINUM

For the three series, we stepped up the materials and crossover for an even smoother finish. By utilizing injection molded graphite woofers, we have increased low-end response and fidelity over the one series. The tweeters on this series are aluminum, making for bright precise, and articulate highs.

FROM THE ARCHITECTURALLY FRIENDLY 3 AND 5 INCH WOOFER MODELS, TO THE EXPANSIVE 6 AND 8 INCH CONFIGURATIONS (THAT SHARE THE SAME MOUNTING HARDWARE AND CUTOUT SIZE), AND EVEN THE DECEPTIVELY SMALL 10 INCH THREE-WAY LOUDSPEAKERS!



### 6" MODELS

All of our six and eight-inch models use the exact same bayonet mounting ring. Literally, in seconds, you can upgrade from our least to most expensive model, without tools or even touching the drywall. The six-inch models feature pivoting tweeters standard, and the higher-end models completely pivot at the woofer.

### 8" MODELS

Our eight-inch models all fit into our six-inch cutout size. It's like doubling the woofer surface area without changing the appearance of the grille. The top three models of this size also feature a genuine three-way design with pivoting tweeters and mid-range diaphragms. Effectively giving those models fifteen-degrees more pivot than the competition.

### 10" MODELS

Our ten-inch models install into a typical eight-inch cutout. So while they look no different once mounted, the bass response is immediately striking. All models of this caliber are three-way loudspeakers with our patented multi-motion pivot, so they image accurately and transparently.

5

### GRAPHITE & SILK DPSD™

The five series is the beginning of our ultra-premium loudspeaker options. These feature multi-motion pivot mid-ranges in the larger models or completely pivoting tweeters in the six-inch line. All five series loudspeakers feature our patented DSPD tweeter and injection-molded graphite woofers.

7

### GLASS FIBER & SILK DPSD™

We've chosen woven fiber-glass for the woofer material on this series for its resilience and sensitivity. It's incredibly stiff, which leads to more accurate sound-reproduction, and it's tightly woven design ensures it never loses its form.

9

### KEVLAR & SILK DPSD™

The most extravagant loudspeakers that we offer fall under the nine series. Both the eight-inch and ten-inch designs feature authentic three-way loudspeaker design with all models in series using audiophile-grade kevlar woofers. Then we beefed-up the crossovers for incredible fidelity and transparency.

## BACKGROUND MUSIC COLLECTION

### SPECIAL OCCASION



D109



D105EX



D103DT

### HIGH END

**EMEA**  
[EMEA FOCUS STOCK]



D89



D85/85EX



D83



D83AEX



D83DT/SUREX



D65EX

### EVERYDAY



D63



D63DT/SUR



D61-6 (6 PACK)



D60-8 (8 PACK)



D80DT



D80-8 (8 PACK)

THE ORIGINAL  
& REVOLUTIONARY  
TOOL-LESS MOUNTING SYSTEM SINCE 2014



### TIME SAVING. TIMELESS.

The tool-less mounting system installs in two parts. First, insert the bayonet ring into the cutout.

The high rails that hold the zip-clips make installing into alternative materials, like wood, more accessible than before.

The clips themselves act as springs. This feature reduces vibration transfer and improves weight distribution when compared to traditional dog-legs.

After the ring is in place, installing the loudspeaker is just a quarter turn. Once you hear the click, push the final lock into place, and the installation is complete.

Any of our six and eight-inch Direction Collection loudspeakers mount into the exact same bayonet ring.

WE FIT AN 8" CEILING SPEAKER INTO A 6 1/2" CEILING SPEAKER FOOTPRINT



**D60-8**  
1" SILK PIVOTING TWEETER

**D80-8**  
1" SILK PIVOTING TWEETER

**D103DT**  
FEATURES DUAL 1" ALUMINUM TWEETERS

# DUAL TWEETER DIRECTOR FAMILY ADDITIONS

Our Director family welcomes in the D60-8 and D80-8, both designed for Tool-less mounting, like always, and easily upgradable. Meanwhile, the Director D103DT features dual-tweeters allowing for stereo sound from a single speaker. The 10" woofer means enhanced low frequencies and the listener has the ability to experience impressive sound.

## DIRECTOR ACCESSORIES



## SPECIFICATIONS

Product	Cut Out	Mounting Depth	Frequency Response	Woofer (s)	Tweeter	Power Handling	UOM
D109	254mm DIAMETER	158mm	25Hz-20kHz +/-3dB	10" & 4" KEVLAR	3/4" SILK DPSD™	50 - 150 W	1
D105EX	254mm DIAMETER	158mm	28Hz-20kHz +/-3dB	10" & 4" GRAPHITE	3/4" SILK DPSD™	50 - 150 W	1
D103DT	254mm DIAMETER	133mm	37Hz-20kHz +/-3dB	10" & 4" GRAPHITE	DUAL 1" ALUMINUM	50 - 150 W	1
D89	254mm DIAMETER	142mm	30Hz-20kHz +/-3dB	8" & 4" KEVLAR	3/4" SILK DPSD™	50 - 150 W	1

Product	Cut Out	Mounting Depth	Frequency Response	Woofer	Tweeter	Power Handling	UOM
D105EX	254mm DIAMETER	158mm	28Hz-20kHz +/-3dB	10" & 4" GRAPHITE	3/4" SILK DPSD™	50 - 150 W	1
D85EX	222mm DIAMETER	142mm	36Hz-20kHz +/-3dB	8" & 4" GRAPHITE	3/4" SILK DPSD™	50 - 150 W	1
D83	222mm DIAMETER	105mm	38Hz-20kHz +/-3dB	8" GRAPHITE	1" ALUMINUM	50 - 150 W	1
D83AEX	222mm DIAMETER	119mm	38Hz-20kHz +/-3dB	8" GRAPHITE	1" ALUMINUM	50 - 150 W	1
D83DT/SUREX	222mm DIAMETER	108mm	38Hz-20kHz +/-3dB	8" GRAPHITE	DUAL 1" ALUMINUM	50 - 150 W	1
D65EX	222mm DIAMETER	134mm	45Hz-20kHz +/-3dB	6 1/2" GRAPHITE	1" SILK DPSD™	40 - 150 W	1

D80DT	222mm DIAMETER	110mm	40Hz-20kHz +/-3dB	8" POLYPROPYLENE	DUAL 1" SILK	40 - 100 W	1
D80-8	222mm DIAMETER	114mm	40Hz-20kHz +/-3dB	8" POLYPROPYLENE	1" SILK PIVOTING	40 - 100 W	8
D63	222mm DIAMETER	89mm	48Hz-20kHz +/-3dB	6 1/2" GRAPHITE	1" ALUMINUM	40 - 150 W	1
D63DT/SUR	222mm DIAMETER	101mm	48Hz-20kHz +/-3dB	6 1/2" GRAPHITE	DUAL 1" ALUMINUM	40 - 150 W	1
D61-6	222mm DIAMETER	89mm	48Hz-20kHz +/-3dB	6 1/2" POLYPROPYLENE	1" SILK PIVOTING	40 - 150 W	6
D60-8	222mm DIAMETER	92mm	50Hz-20kHz +/-3dB	6 1/2" POLYPROPYLENE	1" SILK PIVOTING	40 - 100 W	8





## THEATRE | MEDIA ROOMS

### THEATER LOUDSPEAKERS

CUTOUT DIMENSIONS 198mm x 736mm



THTR69



THTR67

CUTOUT DIMENSIONS 168mm x 364mm



LCR69



LCR65

### C60 LOUDSPEAKERS

CUTOUT DIMENSIONS 120mm x 280mm



C69



C65EX

### C60 ACCESSORIES



BRACKET BRL12  
(10 PACK)



GRILLE GR60C

### SPECIFICATIONS

Product	Cut Out	Mounting Depth	Frequency Response	Woofer	Tweeter	Power Handling	UOM
THTR69	198mm x 736mm	95mm	40Hz-20kHz	QUAD 6 1/2" KEVLAR	1" SILK DPSD™	50 - 200 W	1
THTR67	198mm x 736mm	95mm	40Hz-20kHz	QUAD 6 1/2" GLASS FIBER	1" SILK DPSD™	50 - 200 W	1
LCR69	168mm x 364mm	95mm	51Hz-20kHz	2 X 6 1/2" KEVLAR	1" SILK DPSD™	40 - 150 W	1
LCR67	168mm x 364mm	95mm	53Hz-20kHz	2 X 6 1/2" GLASS FIBER	1" SILK DPSD™	40 - 150 W	1
C69	120mm x 280mm	95mm	40Hz-20kHz	4" X 8" KEVLAR	1" SILK DPSD™	50 - 125 W	1
C65EX	120mm x 280mm	95mm	45Hz-20kHz	4" X 8" GRAPHITE	1" SILK DPSD™	50 - 125 W	1



### MARQUEE LOUDSPEAKERS

We've took the most brilliant, experienced architectural loudspeaker engineers and asked them to design the ultimate home theater system. The result is simply stunning. The Marquee Collection will exceed your expectations in every facet. Available both with both slim on-wall and nearly invisible in-wall configurations, they are easier to install than any other home theater systems in their class. That doesn't mean they won't blow you away. Between the powerful sub-woofer options, the ultra-sensitive custom drivers, and the high-pressure horn-loaded titanium tweeters, there's an amazing home theater experience waiting for you with the Marquee Collection.

THE MARQUEE COLLECTION  
THE MARQUEE COLLECTION



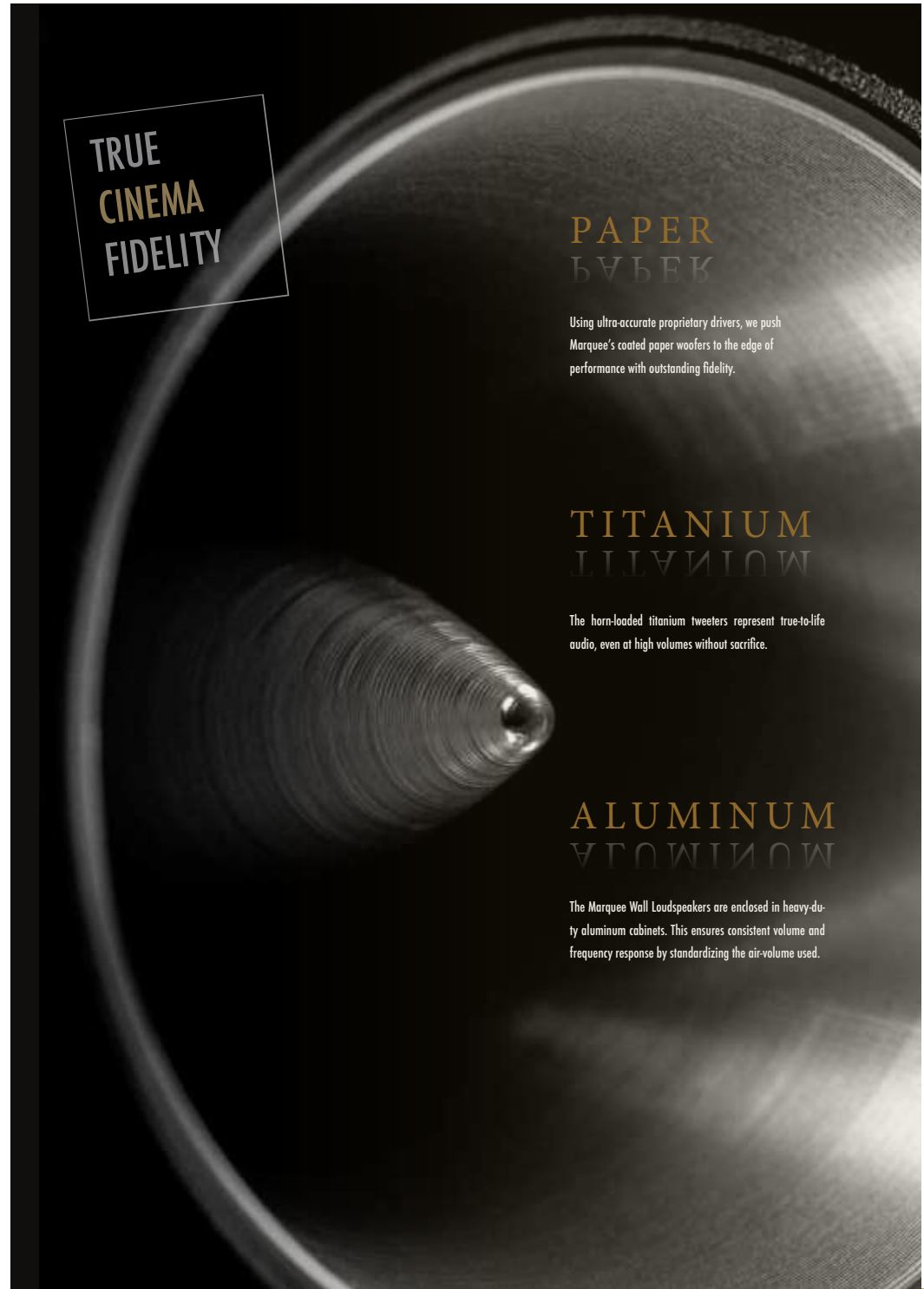
### A FLEXIBLE INSTALL

We've took the most brilliant, experienced architectural loudspeaker engineers and asked them to design the ultimate home theater system. The result is simply stunning. The Marquee Collection will exceed your expectations in every facet. Available both with both slim on-wall and nearly invisible in-wall configurations, they are easier to install than any other home theater systems in their class. That doesn't mean they won't blow you away. Between the powerful sub-woofer options, the ultra-sensitive custom drivers, and the high-pressure horn-loaded titanium tweeters, there's an amazing home theater experience waiting for you with the Marquee Collection.



## DETAILS MATTERS DELIVER? WYLIEK?

The legacy of using paper cones for high fidelity sound reproduction reaches back to the dawn of loudspeaker design. For good reason, the most legendary loudspeakers all use paper cones. The Marquee Collection is no different. Our proprietary resin-coated paper cones and exclusively engineered drivers offer remarkably detailed sound reproduction with durability to last for decades.



TRUE  
CINEMA  
FIDELITY

## PAPER BUBBLE

Using ultra-accurate proprietary drivers, we push Marquee's coated paper woofers to the edge of performance with outstanding fidelity.

## TITANIUM TITANIUM

The horn-loaded titanium tweeters represent true-to-life audio, even at high volumes without sacrifice.

## ALUMINUM ALUMINUM

The Marquee Wall Loudspeakers are enclosed in heavy-duty aluminum cabinets. This ensures consistent volume and frequency response by standardizing the air-volume used.



## ON-WALL OR IN-WALL

As the front, side and rear channels are all complimented by dedicated extruded aluminum enclosures, you can be confident the sound will remain consistent whether you choose the on-wall or in-wall installation option. The aesthetic choice is completely up to you. Display them proudly or hide them away. Our desire is to allow you the option of blending them seamlessly into your décor.

## FLOOR STANDING & IN-CEILING

Ground shaking realism is delivered by a massive driver/cabinet combination that not only reaches extreme sound pressure levels but produces incredible bass extension as well. Triggering the most primal emotional responses, the M1500 Subwoofer establishes a sonic foundation upon which the entire Marquee system is built. Timbre matched to the rest of the Marquee loudspeakers, the M2500 shares the same dynamic response and life like nuance in an in-ceiling format. It is a perfect choice for side, rear and Atmos® channels when the architectural design demands.



M2500IC

M1500SUB

## MARQUEE HOME CINEMA COLLECTION

### IN-WALL MODELS



M5500IW



M5500IWNCE



M3500IW



M3500IWNCE

M5500IW REQUIRES M5500IWNCE | PRE-CONSTRUCTION ONLY

M3500IW REQUIRES M3300IWNCE | PRE-CONSTRUCTION ONLY

### ON-WALL MODELS



M5500OW



M3500OW  
DEALER: \$1,650  
MSRP: \$3,850

### PASSIVE SUB



M1500SUB

### IN-CEILING SPEAKER

CUTOUT DIMENSIONS 10 3/8"



M2500IC

## SPECIFICATIONS

Product	Mounting Depth	Frequency Response	Woofer (s)	Tweeter	Power Handling	UOM
M5500OW	133mm	65Hz - 20kHz	DUAL 8" + 5" COATED PAPER CONE	1" TITANIUM HORN	150 - 300 W	1
M5500IW	89mm	65Hz - 20kHz	DUAL 8" + 5" COATED PAPER CONE	1" TITANIUM HORN	150 - 300 W	1
M5500IWNCE	89mm	N/A	N/A	N/A	N/A	1
M3500OW	133mm	70Hz - 20kHz	DUAL 5" COATED PAPER CONE	1" TITANIUM HORN	150 - 300 W	1
M3500IW	89mm	70Hz - 20kHz	DUAL 5" COATED PAPER CONE	1" TITANIUM HORN	150 - 300 W	1
M3500IWNCE	89mm	N/A	N/A	N/A	N/A	1
M1500SUB	N/A	25Hz - 150Hz	15" COATED PAPER CONE/ACCORDION SURROUND - FRONT FIRING	N/A	200 - 1000 W	1
M2500IC	159mm	70Hz - 150kHz	10" + 4" COATED PAPER CONE	3/4" TITANIUM MMP™	50 - 150 W	1

# INSTAWIDTH™ SOUNDBARS

## ALIGNED TO PERFECTION

## & EASILY MOUNTABLE

Our sleek InstaWidth™ soundbars can be adjusted to precisely match most models of televisions. Patent-pending InstaWidth™ Technology allows the sound bars to expand 25mm on each side for a total expansion of up to 50mm, ensuring an exact fit. The SBR41 and SBR41-LCR are single channel enclosures, the SBR43-50 to SBR43-85 models contain all three channels.

Pair the InstaWidth™ Soundbars with Origin Acoustics Director or Composer Collection speakers for the ultimate surround sound experience.

## 1 CHANNEL SOUNDBARS



SBR41

1 Channel { 1 Tweeter | 1 Woofer }

Replaces SB.5 Model | 302 - 327 mm



SBR41-LCR

1 Channel { 1 Tweeter | 2 Woofers }

Replaces SB1 Model | 409 - 434 mm

## 3 CHANNEL SOUNDBARS



SBR43-50 TO SBR43-85

½ INCH ←

→ ½ INCH

3 Channels { 3 Tweeters | 6 Woofers }

42 3/16" to 74 1/4" Lengths | 1070 - 1905 mm

EXPANDS ½ INCH ON EACH SIDE FOR A TOTAL EXPANSION OF UP TO 1 INCH

### RECOMMENDED SUBWOOFER



SUBSTOEU

SBR43-50

42 3/16" to 43 3/16"  
1070 - 1095 mm

SBR43-55

48 3/16" to 49 3/16"  
1225 - 1250 mm

SBR43-60

52 5/8" to 53 5/8"  
1339 - 1364 mm

SBR43-65

56 7/16" to 57 7/16"  
1435 - 1460 mm

SBR43-70

60 3/4" to 61 3/4"  
1545 - 1570 mm

SBR43-75

65 1/8" to 66 1/8"  
1570 - 1595 mm

SBR43-80

69 7/16" to 70 7/16"  
1765 - 1790 mm

SBR43-85

73 15/16" to 74 15/16"  
1880 - 1905 mm

## SPECIFICATIONS

Product	H x D [Lengths Differ]	Frequency Response	Woofer	Tweeter	Power Handling	UOM
Full SBR Range	152 x 65 mm	65Hz-20kHz	3 1/2" GLASS FIBER	1" SILK DPSD™	75 - 150 W	1



# EXPLORER

## COLLECTION

LUXURY SOUND ON WATER OR LAND BY ORIGIN ACOUSTICS



### TRAVEL THE SEVEN SEAS WITH THE NEW EXPLORER COLLECTION

The Explorer Collection of loudspeakers from Origin Acoustics were developed to withstand the harsh conditions found in marine environments. This includes exposure to saltwater, extreme temperature changes and airborne humidity. They will produce amazing musical fidelity while spending family time on the lake or a trip on the open sea and they have the build quality to last for years in these situations.

Utilizing a unique Weatherproof coating, careful attention has been taken to protect every component in the speaker system, from the electro-mechanical driver elements to the crossover networks. Stainless steel fasteners and connectors have been selected to enhance wire connections and overall system durability. Now you can experience the incredible sound quality we are known for while enjoying your time on the water.



## EXPLORER COLLECTION

We designed the Explorer Collection for ocean conditions. This means yachts, beach homes, lake homes, cabins, showers, decks, anywhere wet, anywhere cold, anywhere hot. How? An extensive redesign of select existing in-ceiling and in-wall models.

The collection was made using a reinforced plastic resin that can withstand temperatures as high as 177°C (342°F) and down to -20°C (-4°F). The crossover is coated and impermeable, all wiring is sealed, there are additional gaskets both on the bayonet ring and loudspeaker, and all hardware is stainless steel. The entire collection is also IP66-rated, so you can be rest assured of its quality.

Each model arrives with its specific EX grille, featuring our proprietary Weather-X technology, allowing for the Explorer speakers to be weather resistant after installation.

## SPEAKER SPECIFICATIONS

Product	Cut Out	Mounting Depth	Frequency Response	Woofers (s)	Tweeter	Power Handling	UOM
D105EX	276mm DIAMETER	6 7/32"	28Hz-20kHz +/- 3dB	10" + 4" GRAPHITE	3/4" ALUMINUM	50 - 150 W	1
D85EX	222mm DIAMETER	5 5/8"	36Hz-20kHz +/- 3dB	8" + 4" GRAPHITE	3/4" ALUMINUM	50 - 150 W	1
D83EX	222mm DIAMETER	4 1/2"	38Hz-20kHz +/- 3dB	8" GRAPHITE	1" ALUMINUM	50 - 150 W	1
D83AEX	222mm DIAMETER	4 11/16"	38Hz-20kHz +/- 3dB	8" PRE-ANGLED GRAPHITE	1" ALUMINUM	50 - 150 W	1
D83DT/SUREX	222mm DIAMETER	5 5/8"	38Hz-20kHz +/- 3dB	8" GRAPHITE	1" DUAL ALUMINUM	50 - 150 W	1
D65EX	222mm DIAMETER	5 1/2"	45Hz-20kHz +/- 3dB	6 1/2" PIVOTING GRAPHITE	3/4" SILK DPSD™	40 - 150 W	1
C65EX	111 X 279mm	3 3/4"	45Hz-20kHz +/- 3dB	4" X 8" GRAPHITE	1" ALUMINUM	50 - 125 W	1

## SUBWOOFER SPECIFICATIONS

Product	Cut Out	Mounting Depth	Frequency Response	Woofers	Dimensions	Power Handling	UOM
DBA10EX	264mm	6 7/32"	35Hz - 200Hz	10" GLASS FIBER	11 1/4"	50 - 150 W	1
CSUB10EX	333mm	3 1/2"	30Hz - 250Hz	10" ANODIZED ALUMINUM	13" x 17" x 3 1/4"	100 - 500 W	1



## IN-WALL



CSUB10EX

Retro-fit Subwoofer



C65EX

## ACCESSORIES



GRILLE GR60CEX



BRACKET BRL12  
(10 PACK)

## IN-CEILING



DBA10EX

Retro-fit Subwoofer



D105EX

## CUTOUT DIAMETER 10 3/8"

## ACCESSORIES



BRACKET BR10  
(10 PACK)



GRILLE SQ10EX  
SQUARE

## CUTOUT DIAMETER 8 3/4"



D85EX



D83DT/SUR EX



D83EX



D83AEX



D65EX

## 8 3/4" ACCESSORIES



1 HR FIRE RATED  
SPEAKER COVER  
UFE1160 (6 PACK)



REUSABLE BRACKET  
REBR68  
(10 PACK)



GRILLE  
SQ68EX  
SQUARE



## THINFIT LOUDSPEAKERS THICKNESS 36mm

### IN-CEILING LOUDSPEAKERS



TF37EX



TF37DTEX



1 7/16"

### IN-WALL LOUDSPEAKERS

CUTOUT DIMENSIONS 418mm X 118mm



TFIW37EX



36mm

### IN-CEILING ACCESSORIES



GRILLE SQ68  
SQUARE

### SPECIFICATIONS

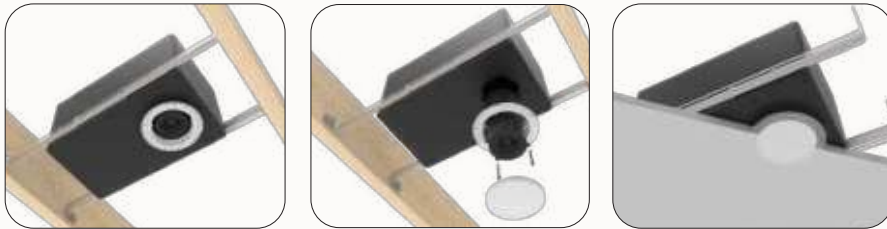
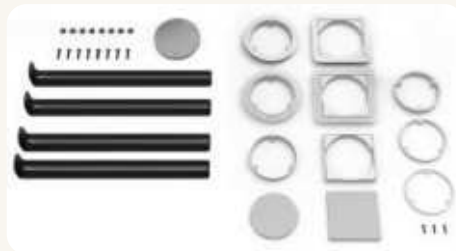
Product	Cut Out	Mounting Depth	Frequency Response	Woofer	Tweeter	Power Handling	UOM
TF37EX	222mm DIAMETER	36mm	120Hz-20kHz	Quad 3"	3/4" ALUMINUM	30 - 100 W	1
TF37DTEX	222mm DIAMETER	36mm	120Hz-20kHz	Dual 3"	DUAL 3/4" ALUMINUM	20 - 50 W	1
TFIW37EX	418mm x 118mm	36mm	90Hz-20kHz	Quad 3"	3/4" ALUMINUM	30 - 100 W	1



## MINIMAL OPENING SYSTEM™



INCLUDED TRIM RING KIT  
CUTOUT DIAMETER 95mm | 100 x100mm



BUILT-IN RAILS SECURE THE SUBWOOFER ENCLOSURE INTO THE CEILING; A SIMPLE TWIST & HEX SCREW LOCKS THE MID-RANGE SPEAKER INTO PLACE

## SPECIFICATIONS

Product	Cut Out	Mounting Depth	Frequency Response	Woofer	Tweeter	Power Handling	UOM
MOS36K	95mm ROUND TRIM DIAMETER 100mm x 100mm SQUARE TRIM	172 mm	44Hz-20kHz +/-3dB	6 1/2" GLASS FIBER	2" ALUMINUM	75 - 200 W	1

## MOUNTING MADE EASY



5 INCH 6 INCH 8 INCH



# OS OUTDOOR SEASONAL SURFACE MOUNT SPEAKERS



# LUXURY LANDSCAPE LOUDSPEAKERS

That time spent in your backyard, when the weather is perfect and you're surrounded by the people you love, that's the moment we designed these loudspeakers for. The high-quality weatherproof enclosures ensure that you'll always have just the right musical ambiance when you need it. Our detail-driven digital signal processing 70V Amplifiers purify your sound while providing long-range rock-solid power. And as the designers of the first luxury bollard loudspeaker, you can look and sound great in a sleek aluminum finish.

## BOLLARD LOUDSPEAKER



## SPECIFICATIONS

Name	Dispersion	Frequency Response	Woofer	Midrange	Tweeter	Power Handling	UOM
LSB64RD-360	360°	48Hz-20kHz	6 1/2" POLYPROPYLENE	4 1/2" ALUMINUM	1" PEI	60 - 100 W	1
LSB64SQ-360	360°	48Hz-20kHz	6 1/2" POLYPROPYLENE	4 1/2" ALUMINUM	1" PEI	60 - 100 W	1
LSB64RD-180	180°	48Hz-20kHz	6 1/2" POLYPROPYLENE	4 1/2" ALUMINUM	1" PEI	60 - 100 W	1
LSB64SQ-180	180°	48Hz-20kHz	6 1/2" POLYPROPYLENE	4 1/2" ALUMINUM	1" PEI	60 - 100 W	1

## OUTDOOR SURFACE MOUNT LOUDSPEAKERS



OS80B | OS80W



OS60B | OS60W



OS60DTB | OS60DTW



OS50B | OS50W

## OUTDOOR SURFACE MOUNT SPECIFICATIONS

Product	Dimensions	Frequency Response	Woofer (s)	Tweeter	Power Handling	UOM
OS80	241 W x 233 D x 355 H mm	60Hz-20kHz +/-3dB	8" IMPP	1" ALUMINUM	60 - 120 W	2
OS60DT	200 W x 203 D x 311 H mm	72Hz-20kHz +/-3dB	6 1/2" IMPP	1" ALUMINUM	40 - 80 W	1
OS60	200 W x 203 D x 311 H mm	72Hz-20kHz +/-3dB	6 1/2" IMPP	DUAL 1" ALUMINUM	40 - 80 W	2
OS50	171 W x 178 D x 254 H mm	84Hz-20kHz +/-3dB	5 1/4" IMPP	1" ALUMINUM	30 - 60 W	2

## ACOUSTIC LANDSCAPE™ SYSTEM

### AS41 | 2 CHANNEL SYSTEM



AS41SYS

### EXTRA SPEAKER PAIRS TO EXPAND THE SYSTEM



EXPANSION PACK  
(SOLD SEPARATELY)

AS4SAT

### SPECIAL ORDER ONLY

## LANDSCAPE SATELLITES & SUBWOOFERS



LS44



LS64

PASSIVE  
RADIATOR



OSUB12



OSUB10

## SPECIFICATIONS

Product	Dimensions	Impedance	Frequency Response	Woofer	Tweeter	Power Handling	UOM
AS41SYS	146mm W X 179mm L X 457mm H 400mm DIA x 327mm H	4-8 Ω	35Hz-20kHz	4 1/2" POLYPROPYLENE SATS 10" POLYPROPYLENE SUB	3/4" PEI	120 W	1
AS4SAT	146mm W X 7 1/16" L X 457mm H	32 Ω	90Hz-20kHz	4 1/2" POLYPROPYLENE	3/4" PEI	120 W	1

Product	Dimensions	Impedance	Frequency Response	Woofer	Tweeter	Power Handling	UOM
LS64	279 x 178 x 178mm	8 OHM/70V	60Hz-20kHz	6 1/2" POLYPROPYLENE   PASSIVE RADIATOR	1" TITANIUM	50 - 150 W	1
LS44	211 x 135 x 135mm	8 OHM/70V	80Hz-20kHz	4 1/2" POLYPROPYLENE	3/4" TITANIUM	50 - 150 W	1

Product	Dimensions	Impedance	Frequency Response	Woofer	Taps	UOM
OSUB12	450mm x 450mm x 596mm	8 ohm/70V	23Hz-100Hz	12" POLYPROPYLENE	300W	1
OSUB10	400mm x 450mm x 546mm	8 ohm/70V	32Hz-100Hz	10" POLYPROPYLENE	300W	1



# SUBS10

## THE SLIMMEST SUBWOOFER

Specially developed to provide resounding bass through a modern & compact design.

Invisibly stylish bass with multiple flexible mounting options.

### FLOOR STANDING SUBWOOFERS



SUBV10EU



SUBD10EU



SUBS10EU

### IN-CEILING SUBWOOFERS

MATCHES IN-CEILING 10"



DBA10EX

#### ACCESSORIES



WSK200 WIRELESS TRANSMISSION KIT

### SPECIFICATIONS

Product	Dimensions w/out Feet	Frequency Response	Input	ACTIVE & PASSIVE Woofer	Power Output	UOM
SUBD10EU	345 x 345 x 345mm	26Hz-180Hz	Analog Line Level	10" COMPOSITE	300 W	1
SUBV10EU	337 x 358 x 385mm	28Hz-200Hz	Line Level   LFE	10" RESIN COATED PAPER CONE	200 W	1
SUBS10EU	400 x 119 x 386mm	35Hz-175Hz	Line Level   LFE	10" WOVEN GLASS FIBER	200 W	1

Product	Dimensions	Frequency Response	Transmitter Power	Working Distance	Operating Voltage	UOM
WSK200	70 DIAMETER x 18mm	20Hz-20kHz	<10dBm	40 meters	DC 5V/0.5A	1

Product	Cut Out Size	Mounting Depth	Frequency Response	Woofer	Dimensions	Power Handling	UOM
DBA10EX	264mm	158mm	35Hz - 200Hz	10" GLASS FIBER	11 1/4"	50 - 150 W	1

# AMPLIFIERS



## AMPLIFIERS

We offer three types of amplifiers, each with different uses to cover all types of loudspeakers and installations. The Distributed Audio amplifiers include the A1250EU and DSP2-200EU. The DSP3 Series is for more demanding installations, for a dedicated subwoofer channel, even more power, and user-configurable DSP processing. Finally, the Sub-A Series are for making devoted, mono, passive subwoofers really shine.

### MONO SUBWOOFER AMPLIFIERS



SUBA150EU

Product	Dimensions w/out Feet	Channels	Frequency Response	Inputs	Output Power Per Channel	UOM
SUBA150EU	429mm W x 226mm D x 45mm H	1	20Hz - 300Hz	LINE LEVEL & LFE	80 W @ 8 Ω 150 W @ 4 Ω	1

## DSP 3-CHANNEL AMPLIFIERS



Product	Dimensions w/out Feet	Channels	Frequency Response	Inputs	Output Power Per Channel	UOM
DSP3-700EU	432mm W x 330mm D x 88mm H	3 (L/R/S)	20Hz - 20kHz	DIGITAL OPTICAL & ANALOG LINE LEVEL	500W @ 8 Ω 700W @ 4 Ω 700W @ 70V	1

DSP3-700EU



Product	Dimensions w/out Feet	Channels	Frequency Response	Inputs	Output Power Per Channel	UOM
DSP3-150EU	432mm W x 241mm D x 88mm H	3 (L/R/S)	20Hz-20kHz	DIGITAL OPTICAL & ANALOG LINE LEVEL	L/R: 150W @ 4 Ω S: 300W @ 4 Ω	1

DSP3-150EU

## DISTRIBUTED AUDIO AMPLIFIERS



Product	Dimensions w/out Feet	Channels	Frequency Response	Inputs	Output Power Per Channel	UOM
A1250EU	432mm W x 254mm D x 45mm H	12	20Hz-20kHz	DIGITAL OPTICAL & ANALOG LINE LEVEL	50W @ 4 Ω	1

A1250EU



Product	Dimensions w/out Feet	Channels	Frequency Response	Inputs	Output Power Per Channel	UOM
DSP2-200EU	216mm W x 386mm D x 45mm H	2	20Hz-20kHz	DIGITAL OPTICAL & ANALOG LINE LEVEL	360 W @ 8 Ω Bridged 200 W @ 4 Ω	1

DSP2-200EU



These amps offer a combination of small size and high power per channel flexibility, making them ideal for installing in commercial applications which demand a variety of outputs. The required power can be utilized where needed – with both Hi-Z and Lo-Z simultaneously, to fit all needs, and all easily set up through the Origin PRO™ amplifier web app user interface. Personalize your system to deliver the power required, with 1-2 channels in Hi-Z or 2-4 in Lo-Z to cover any room size.

ORIGIN PRO

Meanwhile, our robust Origin PRO amplifier web app is built into the amp, to offer fully personalized DSP configuration for any audio/voice system in any context requiring the most advanced multi-zone audio set up. Quickly accessed from any device or browser, the Origin PRO interface directly links to the amp's own Wi-Fi or RJ45 network port, and navigation through the seamless user interface will allow the most complex system to be set up effortlessly in minutes.

Capable of reliably integrating numerous DSP configurations, while offering an extensive scope of tuning capabilities and features: the app enables multi-zone setup, input mixing, priority and ducking, restriction, input and output EQ, S/PDIF output routing, high-pass filter, speaker management and presets, delay, wall controller configuration, sine generator, and more. Now it is a piece of cake to create your unique configurations while efficiently managing the most demanding audio/voice systems, with our state of the art technology.

## PROFESSIONAL AMPLIFIERS

### WALL CONTROLLER ACCESSORIES



PROA1200.2EU



PROA1200.1EU



PROA1000.2EU



PROA1000.1EU



PROA250.2EU



PROA250.1EU



PROA125.2EU



PROA125.1EU



AMPLIFIER WEB APP



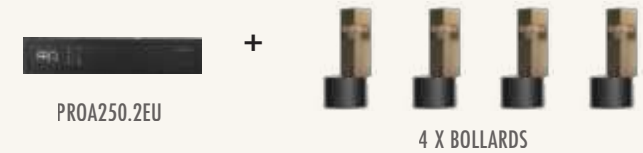
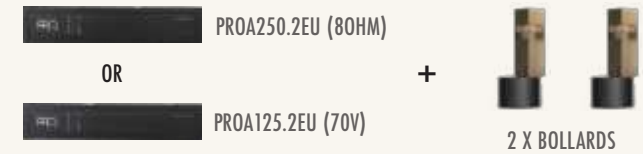
## 1 RU SPECIFICATIONS

MODEL   CHANNELS	ProA250.2EU (4 x Lo-Z / 2 x Hi-Z)	ProA250.1EU (2 x Lo-Z / 1 x Hi-Z)	ProA125.2EU (4 x Lo-Z / 2 x Hi-Z)	ProA125.1EU (2 x Lo-Z / 1 x Hi-Z)
Output Power @ 4/8Ω	4 x 125 W	2 x 125 W	4 x 60 W	2 x 60 W
Output Power @ 70/100V*	2 x 250 W	1 x 250 W	2 x 125 W	1 x 125 W
AutoShare (up to) (Across all Channels)	2 x 250 W	1 x 250 W	1 x 250 W	1 x 125 W
Total System Power	500 W	250 W	250 W	125 W
Power Consumption (W)	150	75	75	75
Idle Power consumption (mW)	<500	<500	<500	<500
Standby Power consumption (W)	14.5	9.1	13.1	9.1
Thermal Loss [BTU/h]	152	78	98	61
Dimensions	44 x 220 x 319 mm (1.7 x 8.7 x 12.6 in)	44 x 220 x 213 mm (1.7 x 8.7 x 8.4 in)	1.7 x 8.7 x 12.6 in 44 x 220 x 319 mm	1.7 x 8.7 x 8.4 in 44 x 220 x 213 mm
Weight	2.8kg (6.2 lbs)	2kg (4.4 lbs)	2.8kg (6.2 lbs)	2kg (4.4 lbs)

## 2 RU SPECIFICATIONS

MODEL   CHANNELS	ProA1200.2EU (4 x Lo-Z / 2 x Hi-Z)	ProA1200.1EU (2 x Lo-Z / 1 x Hi-Z)	ProA1000.2EU (4 x Lo-Z / 2 x Hi-Z)	ProA1000.1EU (2 x Lo-Z / 1 x Hi-Z)
Output Power @ 2Ω	4 x 750 W (SE)	2 x 750 W (SE)	4 x 500 W (SE)	2 x 500 W (SE)*
Output Power @ 4Ω	4 x 750 W (SE)	2 x 750 W (SE)	4 x 500 W (SE)	2 x 500 W (SE)
Output Power @ 8Ω	2 x 1500 W (BTL)	1 x 1500 W (BTL)	2 x 1000 W (BTL)	1 x 1000 W (BTL)**
Output Power @ 70V	4 x 400 W (SE)	2 x 400 W (SE)	4 x 250 W (SE)	2 x 250 W (SE)
Output Power @ 100V	2 x 1500 W (BTL)	1 x 1500 W (BTL)	2 x 1000 W (BTL)	1 x 1000 W (BTL)
Total System Power	2 x 1200 W (BTL)	1 x 1200 W (BTL)	2 x 1000 W (BTL)	1 x 1000 W (BTL)
Power Consumption (W)	2 x 1500 W (BTL)	1 x 1500 W (BTL)	2 x 1000 W (BTL)	1 x 1000 W (BTL)
Idle Power consumption (mW)	3000 W	1500 W	2000 W	1000 W
Standby Power consumption (W)	700	350	700	350
Thermal Loss [BTU/h]	<500	<500	<500	<500
Output Voltage	23.2	13.1	23.2	13.1
Weight	419	203	327	167
	55 Vrms (SE unloaded)	55 Vrms (SE unloaded)	45 Vrms (SE unloaded)	45 Vrms (SE unloaded)
	110 Vrms (BTL unloaded)	110 Vrms (BTL unloaded)	90 Vrms (BTL unloaded)	90 Vrms (BTL unloaded)
	7.4 kg	5.9 kg	7.4 kg	5.9 kg

## RECOMMENDED OUTDOOR BUNDLES





The full OA line of products is available  
via special order with 6 weeks lead time.



ORIGIN  
ACOUSTICS

© Origin Acoustics 2024