

Sound. Vision. Soul.

Pioneer





VSA-LX805

11.4-Channel AV Receiver

260W per Channel (6 Ohms, 1kHz, THD 10%, 1ch Driven)
 7.2.4 (11 Amplified)
 8K/4K Ultra-HD Resolution
 Dolby Vision, HDR10+ & eARC.
 7 x HDMI 2.1 Inputs / 3 HDMI Outputs
 AirPlay 2, DTS Play-fi
 Dolby Atmos, DTS:X, NeuratX
 Dirac Live® Room Correction
 Auro 3D



Black 3.499 €



VSA-LX505

9.2-Channel AV Receiver

230 W/ch (6 ohms, 1 kHz, THD 10 %, 1ch Driven)
 7.2.2 (9 Amplified)
 8K/4K Ultra-HD Resolution
 Dolby Vision, HDR10+ & eARC.
 7 x HDMI 2.1 Inputs / 2 HDMI Outputs
 AirPlay 2, DTS Play-fi
 Dolby Atmos, DTS:X, NeuratX
 Dirac Live® Room Correction



Black Silver 1.599 €



VSA-LX305

9.2-Channel Network AV Receiver

185W per Channel (6 Ohms, 1kHz, THD 10%, 1ch Driven)
 7.2.2 (9 Amplified)
 8K/4K Ultra-HD Resolution
 Dolby Vision, HDR10+ & eARC.
 7 x HDMI 2.1 Inputs / 2 HDMI Outputs
 AirPlay 2, DTS Play-fi
 Dolby Atmos, DTS:X, NeuratX
 Dirac Live® Room Correction



Black Silver 1.399 €



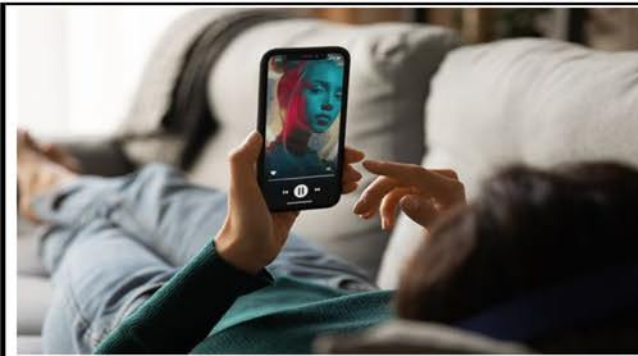
VSX-935

7.2-Channel Network AV Receiver

170 W/ch (6 ohms, 1 kHz, THD 10 %, 1ch Driven)
 Ultra HD Upscaling (4K to 8K, 1080p to 8K/4K)
 Dolby Atmos®, Dolby Surround Upmixer
 DTS:X®, DTS Neural:X® Upmixer
 MCACC Auto Room Tuning
 • Phase Control
 • Subwoofer EQ
 Advanced Sound Retriever (2ch)



Black Silver 899 €



VSX-534D

5.2-Channel AV Receiver

150 W/ch (6 ohms, 1 kHz, THD 10 %, 1ch Driven)
 Ultra HD Upscaling (4K to 8K, 1080p to 8K/4K)
 Dolby Atmos®, Dolby Surround Upmixer
 DTS:X®, DTS Neural:X® Upmixer
 MCACC Auto Room Tuning

- Phase Control
- Subwoofer EQ

Advanced Sound Retriever (2ch)



Black

549 €



AMPLIFIERS

A40AE

Integrated Amplifier



60 W + 60 W (20 Hz-20 kHz, THD 0.5 %, 4 ohms, 2ch Driven)
 30 W + 30 W (20 Hz-20 kHz, THD 0.4 %, 8 ohms, 2ch Driven)
 Guaranteed Speaker Impedance(2 Speaker Terminals): 4-16 ohms
 Frequency Response: 10 Hz-100 kHz +1 dB/-3 dB
 Signal-to-Noise Ratio (IHF-A) 106 dB(LINE In, SP Out), 81 dB (PHONO In,SP Out)
 Direct Energy Design/Direct Energy Construction
 Wolfson 192 kHz/24-bit D/A Converter
 Custom-Made ELNA Capacitors › Hi-Res Audio Compatible
 Direct Function › Power Amp Direct Mode
 Speaker A + B › Tone Control (Bass/Treble)
 Balance Control
 1.6 mm-Thick Rigid Steel Chassis
 Anti-Standing Wave Insulators



Black
Silver

499 €

A10AE

Integrated Amplifier



50 W + 50 W (20 Hz-20 kHz, THD 0.9 %, 4 ohms, 2ch Driven)
 30 W + 30 W (20 Hz-20 kHz, THD 0.7 %, 8 ohms, 2ch Driven)
 Guaranteed Speaker Impedance (2 Speaker Terminals): 4-16 ohms
 Frequency Response: 10 Hz-100 kHz + 1 dB/-3 dB
 Direct Energy Design
 Clean Ground Construction
 Isolated Power Supply Circuits
 Direct Function
 Tone Control (Bass/Treble)
 Balance Control
 Loudness
 1.6 mm-Thick Rigid Steel Chassis
 Auto Standby





Black
Silver

349 €







2 CHANNELS RECEIVERS



<p>135 W/ch (6 ohms, 1 kHz, THD 1.0 %, 1ch Driven) Analogue Discrete 2ch Amplifier Music File Playback via Network/USB: MP3, WMA, WAV, AIFF, AAC, FLAC, and Apple Lossless • 192 kHz/24-bit Audio Playback (WAV*1 , FLAC*1) • DSD Direct Playback (2ch, 5.6 MHz) Spotify®, TIDAL, and Deezer Digital Music-Streaming Internet Radio with TuneIn FlareConnect™ for Multi-room Audio Chromecast built-in Works with the Google Assistant*3 DTS Play-Fi Ready*3 Bluetooth® Wireless Technology</p>	<p>SXN30AE Network Stereo Receiver</p> 		<p>Black Silver</p>	<p>599 €</p>
---	--	---	-------------------------	--------------

<p>SXN10AE Network Stereo Receiver</p> 	<p>100 W/ch (6 ohms, 1 kHz, THD 1.0 %, 1ch Driven) Analogue Discrete 2ch Amplifier Direct Mode for Pure Sound Output as Originally Intended Tone Controls: Bass (100 Hz)/Treble (10 kHz): ±10 dB Frequency Response: DIRECT 10 Hz-100 kHz, +1 dB/-3 dB Bluetooth® Wireless Technology (Ver. 4.2, Profile: A2DP/AVRCP, Codec: SBC/AAC) AM/FM (RDS) Tuner with 40 Station Presets › Preset Station Naming (Up to 10 Characters) Speaker A/B Selector FL Display , Sleep Timer, Auto Standby</p>		<p>Black</p>	<p>349 €</p>
---	---	--	--------------	--------------

CD PLAYERS

<p>SACD/CD Player PD50AE</p> 	<p>Works as a USB D/A Converter* Analogue/Digital Discrete Power Supply Circuitry Custom Electrolytic Capacitors for High-Quality Audio High-Quality Audio Processing by ESS ES9026PRO DAC 4 Channel Parallel Drive Lock Range Adjust Function for Reducing Jitter by Adjusting Lock Range Accuracy Up Sampling (Up to 384kHz) Digital Filter with 3 Modes (SHARP/SLOW/SHORT) SACD, MQA-CD, CD, CD-R/RW, DVD-R/RW, DVD+R/RW WAV/FLAC/AIFF/ALAC/MP3/WMA/AAC/DFE/DSF/MQA</p>		<p>Black Silver</p>	<p>1.599 €</p>
---	--	---	-------------------------	----------------

<p>SACD/CD Player PD30AE</p> 	<p>192 kHz/24-bit DAC. High-Accuracy Clock. Aluminium Front Panel. Rigid Chassis. Quiet Drive Mechanism. Large Capacity EI Transformer. Headphone Terminal for High-Quality Sound. Detachable AC Power Cord (Replaceable with a Thick Cable)</p>		<p>Black</p>	<p>349 €</p>
---	---	--	--------------	--------------

<p>CD Player PD10AEM2</p> 	<p>192 kHz/24-bit DAC High-Accuracy Clock Rigid Chassis Quiet Drive Mechanism Large Capacity EI Transformer CD/CD-R/CD-RW/MP3 (CD-R/CD-RW) 25-Track Memory Playback</p>		<p>Black Silver</p>	<p>299 €</p>
--	---	---	-------------------------	--------------